



SportTRAINER

OWNERS MANUAL



INSTRUCTION MANUAL

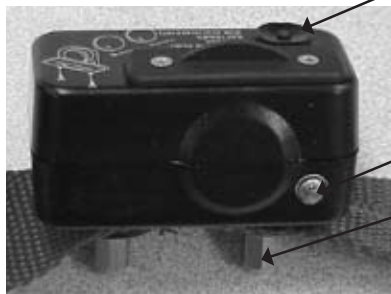
Thank you for purchasing your SportTrainer, one of the finest training systems available for training your dog. Due to the similarities between the Big and Little dog receivers, both are discussed in this manual. Two simple steps will prepare your unit for use.

Step I – Insert the batteries in the handheld transmitter and receiver collar.

Step II – Activate the receiver collar.

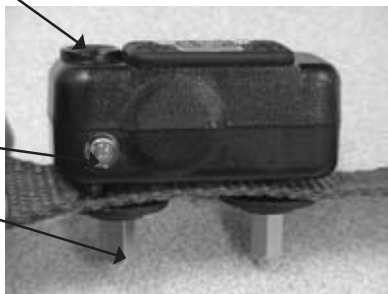
Please remember to fill out your warranty card before continuing. Either mail the enclosed card or register online at www.sportdog.net.

Push button
(on/off) switch



LED

Contact
Points



Big Dog Receiver Collar for PST-105S

Little Dog Receiver Collar for PST-105

Instantaneous Level
Adjustment Knob

LED

Tone Only
Button

Stimulation
without
Tone Button



**SportTrainer Hand Held
Transmitter**

Step I — Insert Batteries

Receiver for the Little Dog Sport Trainer 105

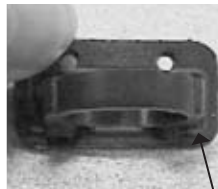
- Use a small Philips screwdriver to remove the two screws on the receiver.
- Press the battery door up in the direction of the arrows on the door. It will move up slightly and the door will release.
- Insert two, 3-volt lithium CR2032 batteries per the diagram on the receiver.
- Replace the battery door. Check to ensure the gasket is in place and clean.
- Tighten the screws. Do not over tighten.



Press Door Up



Pull Door Out



Gasket for the PST-105

Receiver for the Big Dog Sport Trainer 105S

- Use a small Philips screwdriver to remove the two screws on the receiver and remove the battery door.
- Remove the battery door.
- Insert two, 3-volt lithium CR2032 batteries per the diagram on the battery door.
- Replace the battery door. Check to ensure o-ring is in place and clean. Press and snap into the receiver.
- Tighten the screws, being careful not to overtighten.



O-Ring for for the PST-105S

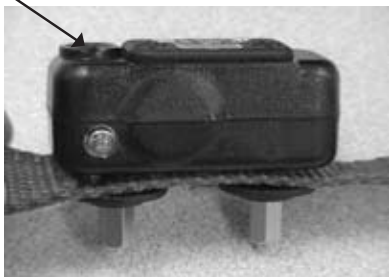
Hand Held Transmitter for Both Remote Trainers.

- Pull the battery door open at the top.
- Insert the 9V battery according to the diagram in the transmitter. It will only fit one way.
- Replace the battery door by positioning the bottom edge and snapping door into place.
- Activate the transmitter by pressing either button.
↗ or ↖ Ensure the receiver collar is not on the dog. The transmitter LED will light.

Positive "+" polarity of battery




Push button
(on/off) switch




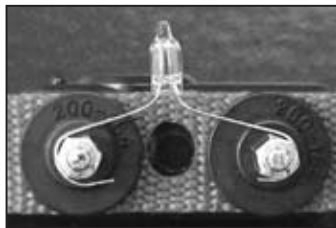
Step II — Activate the Receiver Collar

- To activate the receiver collar, press and release the receiver's on/off button.
- When the button is pressed, the LED will immediately come on and then flash twice after the button is released, indicating that the receiver is ready to receive signals.
- To turn off the receiver collar, press and release the on/off button. The LED light will come on when the button is pressed and will flash three times after the button is released, indicating that the unit has been turned off.

TESTING YOUR UNIT BEFORE USING

Note: An alternative way for quickly checking whether or not the receiver is on is to press the top  button on the transmitter. Pressing this button will result in the receiver to beep only.

- Turn off the receiver by pressing the on/off button. The receiver LED will flash three times.
- Loosen the two contact points on the collar until the threading is exposed.
- Bend the wire ends of the test light and twist them around the exposed threading.
- Securely hand-tighten the contact points over the test wires.
- Activate the receiver by pressing the on/off button. The LED will blink once.
- Turn the adjustment knob on the transmitter to level 5.
- Press the Stimulation button. 
- The test light will illuminate, indicating that the unit is operational.
- The higher the intensity level that is set on the transmitter, the brighter the light will shine.
- Loosen the contact points, remove the test wires, and securely tighten the contact points. Do not over tighten.



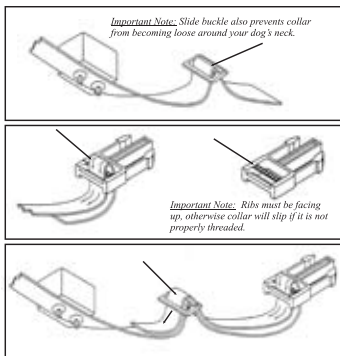
Test Light on Receiver Probes

USING YOUR TRAINING SYSTEM

Fitting your Receiver Collar

- Wash both your dog's neck and the contact points on the receiver collar.
- Place the activated receiver high on the underside of your dog's neck.
- Buckle the collar snugly on your dog, allowing enough room so that you can comfortably place one finger between the contact points and your dog's neck.

NOTE: Do not buckle the collar too tightly. Doing so can cause Pressure Necrosis, a condition that results in skin deterioration. Check your dog's collar regularly. Remove the collar weekly and wash your dog's neck and contact points with a mild soap that is approved by a veterinarian. If a rash appears or sores form, remove the collar for a few days. When placing the collar back onto your dog, make sure that it is secured properly.



To train using tone: 📢

- Press the tone button on the transmitter. This button can be used to “warn” your dog instead of giving him a stimulation. The sound emitted by the receiver can be just as effective as the stimulation on some dogs.
- To indicate that tone is being activated, the red LED light on the transmitter will remain illuminated as long as the button is pressed. If the LED light begins flashing every four seconds or does not illuminate, the transmitter battery should be replaced.

To train using stimulation: ⚡

Use this button when either training or deterring unwanted behavior when the tone is not effective. Your dog responds to the transmitter's stimulation through two contact points on the waterproof receiver that touch the dog's neck. Therefore, it is important that the receiver is fitted properly onto your dog.

Your unit comes equipped with two sets of contact points, medium and long. The medium should be used with dogs having shorter hair; the long should be used with dogs having longer hair. The contact points on the receiver, from the factory, are medium length.

- Select level 1 (lowest) on your transmitter.
- Walk around and wait for your dog to become distracted.
- Without a verbal command, press the stimulation ⚡ button down for 2 or 3 seconds.
- To indicate that stimulation is being delivered, the red LED light on the transmitter will remain illuminated for as long as the button is pressed. If the LED light begins flashing every four seconds or does not illuminate, the battery should be replaced.

If after pressing the bottom/stimulation button the dog is still not responding to the stimulation, even at level 10, then the contact points may need to be changed to ensure better contact with the dog's skin. If the dog still shows no response, then the dog's hair may need to be trimmed. This will allow the contact points to penetrate through the hair and touch the dog's skin.

NOTE: The stimulation will transmit for no more than 8 continuous seconds no matter how long the button is pressed. To re-activate, release and re-press the button.

- Most dogs will turn their heads slightly in curiosity, scratch at the collar, or flick their ears at the correct stimulation level.
- If your dog shows no reaction to the stimulation level, go up 1 level at a time until you find the proper level for your dog.
- Since every dog is unique, it is important that you find the correct stimulation level for your dog. Take your time with this exercise before increasing the stimulation level, if needed.

NOTE: A slight change in your dog's expression will let you know you are at the correct stimulation level. Your dog should not vocalize or panic, if this happens the stimulation level is too high. Go back to the previous level, without a verbal command, press the stimulation button down for 2 or 3 seconds.

FREQUENTLY ASKED QUESTIONS

Q #1: What is the range of my trainer?

A: Your trainer will operate up to 100 yards. However, weather and environmental factors such as terrain may affect its range.

Q #2: These products use what type of batteries?

A: Your receiver requires two, replaceable, 3-volt lithium batteries (CR2032). A set is included. Your transmitter requires one, 9-V alkaline battery, which is included. Both types of batteries are widely available at retail outlets.

Q #3: How much training time can I expect from my unit?

A: If your receiver is continuously turned on, you can expect having approximately two weeks of training time before needing to replace the batteries. **You can prolong the life of your batteries by turning off the receiver when it is not being use.** Your transmitter should provide you with approximately two to four months of training time. These estimates may vary depending upon type and frequency of used.

Q #4: How will I know if a battery needs replacing?

A: The LED lights on your transmitter and receiver will tell you when you have a low battery. When the batteries are low on either unit, its LED light will flash once every four seconds.

Q #5: How should I store the transmitter and receiver when I am not using them?

- A. If you do not plan to use for two weeks or more, turn off receiver. Store both at room temperature.

TROUBLESHOOTING GUIDE

Please refer to the guide below if you are experiencing problems with your Remote Trainer. Please call the Customer Care Center at 1-800-732-0144 with additional questions.

Problem: My dog is not responding when I press the stimulation button.

1. Check to see if the receiver collar is turned on.
2. Increase the level of intensity. As you turn the intensity knob on the hand held transmitter, watch your dog to determine his “recognition” level of the signal. See the “To train using stimulation” section.
3. Make sure that the collar’s contact points are placed snugly against your dog’s skin.
4. Make sure that the contact points on the receiver are not too short for your dog’s hair length. If so, remove the medium length contact points and replace them with the longer length contact points.
5. Check to see if either the transmitter or receiver batteries need replacing.



Problem: My training system’s range does not go to 100 yards.

1. Check to see if the receiver is turned on.
2. Check to see if either the transmitter or receiver batteries need replacing.
3. Make sure that you and your dog’s immediate surroundings are free from metal obstructions that can reduce the unit’s operational range.

Problem: The receiver collar will not turn on.

1. Replace the batteries.

Problem: The receiver is not responding to the transmitter.

1. Check to see if the receiver is turned on.
2. Check to see if either the transmitter or receiver batteries need replacing.
3. Make sure that the stimulation button on the transmitter is not being pressed for more than eight seconds. After eight seconds, the transmitter will stop sending signals until the button is released and again pressed.
4. Verify ID codes are matched:
 - Put intensity knob at level (1).
 - Stand 3 or more feet away from receiver.
 - Press  and  at the same time for 10 seconds or until receiver double beeps.

Problem: The receiver collar is not delivering stimulation.

1. Check to see if the receiver is turned on.
2. Check if the receiver beeps when the tone button is pressed.
3. Use the test light to verify whether the unit is operational.

PRODUCT WARRANTY

Please register your product by mailing in the warranty card or registering online at www.sportdog.net.

All parts are covered under warranty for the life of the product. Labor is covered for the first year of ownership. Thereafter, there is a minimum service charge for the repair or replacement of the product. Misuse, loss, or improper handling is not covered. Radio Systems Corporation will not pay for loss of time, inconvenience, loss of use of your product, loss of your product, or any incidental or consequential damages.

SERVICE

If you need service, please contact the Customer Care Center at 1-800-732-0144 for help in troubleshooting and, if needed, to arrange a repair for your product (a service charge may apply). Also, please visit our website www.sportdog.net for more Frequently Asked Questions and Troubleshooting Tips.

FCC COMPLIANCE

This equipment has been tested and found to comply with the limits for a Class B digital device, pursuant to Part 15 of the FCC rules. Unauthorized changes or modifications to the equipment that are not approved by Radio Systems Corporation are in violation of FCC regulations and could void the user's authority to operate the equipment and void the product warranty.

FCC limits are designed to provide reasonable protection against harmful interference when the equipment is operated in a residential environment. This equipment generates, uses and can radiate radio frequency energy. If not installed and used in accordance with the instruction manual, the equipment may cause harmful interference to radio communications. There is no guarantee that interference will not occur in a practical installation.

Radio Systems Corporation
10427 Electric Ave.
Knoxville, TN 37932
1-800-732-0144
www.sportdog.net
400-589/1